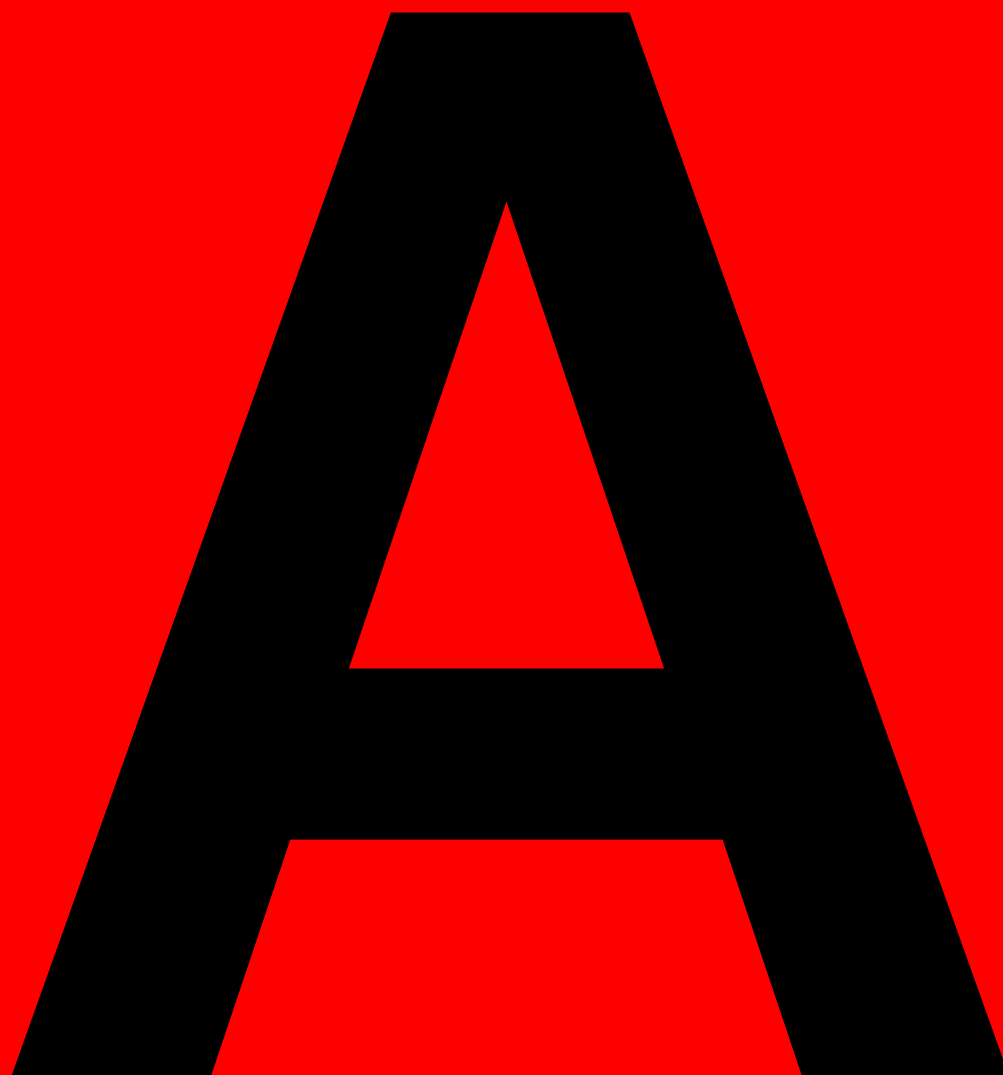




Akkurat LL Bold

Font Format: Opentype PostScript (Opentype CFF)
Designer: Laurenz Brunner (2004-2018)





Glyph Map

All 1023 glyphs of Akkurat LL Bold in physical order.

□				!	"	#	\$	%	&	'	()	*	+	,	-	.	/	0
1	2	3	4	5	6	7	8	9	:	;	<	=	>	?	@	A	B	C	D
E	F	G	H	I	J	K	L	M	N	O	P	Q	R	S	T	U	V	W	X
Y	Z	[\]	^	_	`	a	b	c	d	e	f	g	h	i	j	k	l
m	n	o	p	q	r	s	t	u	v	w	x	y	z	{		}	~		i
¢	£	¤	¥	¦	§	¨	©	ª	«	¬	-	®	¯	°	±	²	³	´	µ
¶	·	¸	¹	º	»	¼	½	¾	¿	À	Á	Â	Ã	Ä	Å	Æ	Ç	È	É
Ê	Ë	Ì	Í	Î	Ï	Ð	Ñ	Ò	Ó	Ô	Õ	Ö	×	Ø	Ù	Ú	Û	Ü	Ý
Þ	ß	à	á	â	ã	ä	å	æ	ç	è	é	ê	ë	ì	í	î	ï	ð	ñ
ò	ó	ô	õ	ö	÷	ø	ù	ú	û	ü	ý	þ	ÿ	Ā	ā	Ă	ă	Ą	ą
Ć	ć	Ĉ	ĉ	Č	č	Ď	ď	Đ	đ	Ē	ē	Ĕ	ĕ	É	é	Ę	ę		
Ė	ė	Ĝ	ĝ	Ğ	ğ	Ġ	ġ	Ĥ	ĥ	Ħ	ħ	Ĩ	ĩ	Ī	ī	Ĭ	ĭ	Ĵ	ĵ
Ĳ	ĳ	Ĵ	ĵ	Ķ	ķ	κ	Ĺ	ĺ	Ł	ł	Ł	ł	Ł	ł	Ł	ł	Ł	ł	Ł
ł	Ń	ń	Ņ	ņ	Ň	ň	’	Ŋ	ŋ	Ō	ō	Ŏ	ö	Ŏ	ö	Œ	œ	Ŕ	ŕ
Ŗ	ŗ	Ř	ř	Ś	ś	Ŝ	ŝ	Ş	ş	Š	š	Ţ	ţ	Ť	ť	Ŧ	ŧ	Ũ	ũ
Ū	ū	Ŭ	ŭ	Ű	ű	Ų	ų	Ŵ	ŵ	Ŷ	ŷ	Ÿ	Ž	ž	Ž	ž	Ž	ž	Ž
ž	Θ	θ	Ζ	ζ	Ǻ	ǻ	Ǽ	ǽ	Ǿ	ǿ	Ǻ	ǻ	Ǽ	ǽ	Ǿ	ǿ	Ǻ	ǻ	Ǽ
ǽ	Ǿ	ǿ	Ǻ	ǻ	Ǽ	ǽ	Ǿ	ǿ	Ǻ	ǻ	Ǽ	ǽ	Ǿ	ǿ	Ǻ	ǻ	Ǽ	ǽ	Ǿ
ǿ	Ǻ	ǻ	Ǽ	ǽ	Ǿ	ǿ	Ǻ	ǻ	Ǽ	ǽ	Ǿ	ǿ	Ǻ	ǻ	Ǽ	ǽ	Ǿ	ǿ	Ǻ
Ǻ	ǻ	Ǽ	ǽ	Ǿ	ǿ	Ǻ	ǻ	Ǽ	ǽ	Ǿ	ǿ	Ǻ	ǻ	Ǽ	ǽ	Ǿ	ǿ	Ǻ	ǻ
Ǽ	ǽ	Ǿ	ǿ	Ǻ	ǻ	Ǽ	ǽ	Ǿ	ǿ	Ǻ	ǻ	Ǽ	ǽ	Ǿ	ǿ	Ǻ	ǻ	Ǽ	ǽ
ǽ	Ǿ	ǿ	Ǻ	ǻ	Ǽ	ǽ	Ǿ	ǿ	Ǻ	ǻ	Ǽ	ǽ	Ǿ	ǿ	Ǻ	ǻ	Ǽ	ǽ	Ǿ
ǿ	Ǻ	ǻ	Ǽ	ǽ	Ǿ	ǿ	Ǻ	ǻ	Ǽ	ǽ	Ǿ	ǿ	Ǻ	ǻ	Ǽ	ǽ	Ǿ		
·	Δ	Σ	Ω	μ	π	฿	Ẁ	ẁ	Ẃ	ẃ	Ẅ	ẅ	Ẇ	ẇ	Ẉ	ẉ	Ẋ	ẏ	Ỳ
ỳ	Ỵ				—	—	—	‘	’	,	“	”	„	†	‡	•	…	‰	’
”	‹	›	/	◊	◊	◊	◊	◊	◊	◊	◊	◊	◊	◊	◊	◊	◊	◊	◊
◊	◊	◊	◊	◊	◊	◊	◊	◊	◊	◊	◊	◊	◊	◊	◊	◊	◊	◊	◊
Ω	⅓	⅓	⅓	⅓	⅓	⅓	⅓	⅓	⅓	⅓	⅓	⅓	⅓	⅓	⅓	⅓	⅓	⅓	⅓
⅓	⅓	⅓	⅓	⅓	⅓	⅓	⅓	⅓	⅓	⅓	⅓	⅓	⅓	⅓	⅓	⅓	⅓	⅓	⅓
⅓	⅓	⅓	⅓	⅓	⅓	⅓	⅓	⅓	⅓	⅓	⅓	⅓	⅓	⅓	⅓	⅓	⅓	⅓	⅓
⅓	⅓	⅓	⅓	⅓	⅓	⅓	⅓	⅓	⅓	⅓	⅓	⅓	⅓	⅓	⅓	⅓	⅓	⅓	⅓
⅓	⅓	⅓	⅓	⅓	⅓	⅓	⅓	⅓	⅓	⅓	⅓	⅓	⅓	⅓	⅓	⅓	⅓	⅓	⅓
⅓	⅓	⅓	⅓	⅓	⅓	⅓	⅓	⅓	⅓	⅓	⅓	⅓	⅓	⅓	⅓	⅓	⅓	⅓	⅓
⅓	⅓	⅓	⅓	⅓	⅓	⅓	⅓	⅓	⅓	⅓	⅓	⅓	⅓	⅓	⅓	⅓	⅓	⅓	⅓
⅓	⅓	⅓	⅓	⅓	⅓	⅓	⅓	⅓	⅓	⅓	⅓	⅓	⅓	⅓	⅓	⅓	⅓	⅓	⅓
⅓	⅓	⅓	⅓	⅓	⅓	⅓	⅓	⅓	⅓	⅓	⅓	⅓	⅓	⅓	⅓	⅓	⅓	⅓	⅓
⅓	⅓	⅓	⅓	⅓	⅓	⅓	⅓	⅓	⅓	⅓	⅓	⅓	⅓	⅓	⅓	⅓	⅓	⅓	⅓
⅓	⅓	⅓	⅓	⅓	⅓	⅓	⅓	⅓	⅓	⅓	⅓	⅓	⅓	⅓	⅓	⅓	⅓	⅓	⅓
⅓	⅓	⅓	⅓	⅓	⅓	⅓	⅓	⅓	⅓	⅓	⅓	⅓	⅓	⅓	⅓	⅓	⅓	⅓	⅓
⅓	⅓	⅓	⅓	⅓	⅓	⅓	⅓	⅓	⅓	⅓	⅓	⅓	⅓	⅓	⅓	⅓	⅓	⅓	⅓
⅓	⅓	⅓	⅓	⅓	⅓	⅓	⅓	⅓	⅓	⅓	⅓	⅓	⅓	⅓	⅓	⅓	⅓	⅓	⅓
⅓	⅓	⅓	⅓	⅓	⅓	⅓	⅓	⅓	⅓	⅓	⅓	⅓	⅓	⅓	⅓	⅓	⅓	⅓	⅓
⅓	⅓	⅓	⅓	⅓	⅓	⅓	⅓	⅓	⅓	⅓	⅓	⅓	⅓	⅓	⅓	⅓	⅓	⅓	⅓
⅓	⅓	⅓	⅓	⅓	⅓	⅓	⅓	⅓	⅓	⅓	⅓	⅓	⅓	⅓	⅓	⅓	⅓	⅓	⅓
⅓	⅓	⅓	⅓	⅓	⅓	⅓	⅓	⅓	⅓	⅓	⅓	⅓	⅓	⅓	⅓	⅓	⅓	⅓	⅓
⅓	⅓	⅓	⅓	⅓	⅓	⅓	⅓	⅓	⅓	⅓	⅓	⅓	⅓	⅓	⅓	⅓	⅓	⅓	⅓
⅓	⅓	⅓	⅓	⅓	⅓	⅓	⅓	⅓	⅓	⅓	⅓	⅓	⅓	⅓	⅓	⅓	⅓	⅓	⅓
⅓	⅓	⅓	⅓	⅓	⅓	⅓	⅓	⅓	⅓	⅓	⅓	⅓	⅓	⅓	⅓	⅓	⅓	⅓	⅓
⅓	⅓	⅓	⅓	⅓	⅓	⅓	⅓	⅓	⅓	⅓	⅓	⅓	⅓	⅓	⅓	⅓	⅓	⅓	⅓
⅓	⅓	⅓	⅓	⅓	⅓	⅓	⅓	⅓	⅓	⅓	⅓	⅓	⅓	⅓	⅓	⅓	⅓	⅓	⅓
⅓	⅓	⅓	⅓	⅓	⅓	⅓	⅓	⅓	⅓	⅓	⅓	⅓	⅓	⅓	⅓	⅓	⅓	⅓	⅓
⅓	⅓	⅓	⅓	⅓	⅓	⅓	⅓	⅓	⅓	⅓	⅓	⅓	⅓	⅓	⅓	⅓	⅓	⅓	⅓
⅓	⅓	⅓	⅓	⅓	⅓	⅓	⅓	⅓	⅓	⅓	⅓	⅓	⅓	⅓	⅓	⅓	⅓	⅓	⅓
⅓	⅓	⅓	⅓	⅓	⅓	⅓	⅓	⅓	⅓	⅓	⅓	⅓	⅓	⅓	⅓	⅓	⅓	⅓	⅓
⅓	⅓	⅓	⅓	⅓	⅓	⅓	⅓	⅓	⅓	⅓	⅓	⅓	⅓	⅓	⅓	⅓	⅓	⅓	⅓
⅓	⅓	⅓	⅓	⅓	⅓	⅓	⅓	⅓	⅓	⅓	⅓	⅓	⅓	⅓	⅓	⅓	⅓	⅓	⅓
⅓	⅓	⅓	⅓	⅓	⅓	⅓	⅓	⅓	⅓	⅓	⅓	⅓	⅓	⅓	⅓	⅓	⅓	⅓	⅓
⅓	⅓	⅓	⅓	⅓	⅓	⅓	⅓	⅓	⅓	⅓	⅓	⅓	⅓	⅓	⅓	⅓	⅓	⅓	⅓
⅓	⅓	⅓	⅓	⅓	⅓	⅓	⅓	⅓	⅓	⅓	⅓	⅓	⅓	⅓	⅓	⅓			

(IE)	(IL)	(IS)	(IT)	(JP)	(KK)	(KR)	(LT)	(LU)	(LV)	(MK)	(MF)	(MS)	(MT)	(NE)	(NL)	(NO)	(NZ)	(PH)	(PL)
(PS)	(PT)	(RO)	(RU)	(SE)	(SK)	(SL)	(SR)	(TG)	(TR)	(TT)	(TW)	(UA)	(UK)	(US)	(UZ)	fi	fl		\$
i	l	l	˘	˘	ı	€	a	b	c	d	e	f	g	h	i	j	k	l	m
o	p	q	r	s	t	u	v	w	x	y	z	®	ı	ıı	ııı	ıııı	vı	vıı	vııı
vıııı	ııııı	xı	oı	ıı	ııı	ıııı	ııııı	ıııııı	ııııııı	ıııııııı	ııııııııı	ıııııııııı	ııııııııııı	ıııııııııııı	ııııııııııııı	ıııııııııııııı	ııııııııııııııı	ıııııııııııııııı	ııııııııııııııııı
7	8	9			#	\$	%	+	,	.	0	1	2	3	4	5	6	7	8
9	:	;	<	=	>	¢	£	¤	¥	§	¨	±	×	÷	ƒ	฿			%
ℳ	℔	ℓ	đ	€	₰	₹	₱	₪	₺	₹	₺	₪	₺	₪	₺	₪	₺	₪	₺
≥	×	FI	FL	O	1	2	3	4	5	6	7	8	9	A	B	C	D	E	F
G	H	I	J	K	L	M	N	O	P	Q	R	S	T	U	V	W	X	Y	Z
SS	À	Á	Â	Ã	Ä	Å	Æ	Ç	È	É	Ê	Ë	Ì	Í	Î	Ï	Ð	Ñ	Ò
Ó	Ô	Õ	Ö	Ø	Ù	Ú	Û	Ü	Ý	Þ	ÿ	Ā	Ă	Ą	Ć	Ĉ	Č	Č	Ď
Đ	Ē	Ĕ	Ė	Ę	Ė	Ĝ	Ğ	Ġ	Ĥ	Ħ	Ĩ	Ī	Ĭ	Į	İ	İJ	Ĵ	Ķ	
K	Ĺ	Ł	Ł	Ł	Ł	Ń	Ņ	Ň	Ŋ	Ŋ	Ŋ	Ŋ	Ŋ	Ŋ	Ŋ	Ŋ	Ŋ	Ŋ	Ŋ
Ş	Š	Ţ	Ť	Ŧ	Ũ	Ū	Ŭ	Ů	Ű	Ų	Ŵ	Ŷ	Ž	Ž	Ž	Ž	Ž	Ž	Ž
Ŭ	Ū	Ŭ	Ŭ	Ŭ	Ŭ	Ŭ	Ŭ	Ŭ	Ŭ	Ŭ	Ŭ	Ŭ	Ŭ	Ŭ	Ŭ	Ŭ	Ŭ	Ŭ	Ŭ
ˆ	ˆ	ˆ	ˆ	ˆ	ˆ	ˆ	ˆ	ˆ	ˆ	ˆ	ˆ	ˆ	ˆ	ˆ	ˆ	ˆ	ˆ	ˆ	ˆ
5	6	7	8	9	:	[]	{	}	ı	«	-	»	ı	ˆ	ˆ	ˆ	ˆ	ˆ
ˆ	ˆ	ˆ	ˆ	ˆ	ˆ	ˆ	ˆ	ˆ	ˆ	ˆ	ˆ	ˆ	ˆ	ˆ	ˆ	ˆ	ˆ	ˆ	ˆ
à	á	â	ã	ä	å	ā	ă	ą	ă	ă	ă	ă	ă	ă	ă	ă	ă	ă	ă
g	à	á	â	ã	ä	å	ā	ă	ą	ă	ă	ă	ă	ă	ă	ă	ă	ă	ă
¹	₁	₁	₁	●	×	┐	ff	ffi	fi	fj	fl	ˆ	ˆ	ˆ	ˆ	ˆ	ˆ	ˆ	ˆ
ˆ	ˆ	ˆ	ˆ	ˆ	ˆ	ˆ	ˆ	ˆ	ˆ	ˆ	ˆ	ˆ	ˆ	ˆ	ˆ	ˆ	ˆ	ˆ	ˆ

Encoded Characters

All encoded characters should be accessible with every unicode capable application. For details about Unicode Blocks visit the [Unicode Website](#).

Basic Latin

Block from 0000 to 007F

0000	000D	0020	0021	0022	0023	0024	0025	0026	0027	0028	0029	002A	002B	002C	002D	002E	002F	0030	0031
			!	"	#	\$	%	&	'	()	*	+	,	-	.	/	0	1
0032	0033	0034	0035	0036	0037	0038	0039	003A	003B	003C	003D	003E	003F	0040	0041	0042	0043	0044	0045
2	3	4	5	6	7	8	9	:	;	<	=	>	?	@	A	B	C	D	E
0046	0047	0048	0049	004A	004B	004C	004D	004E	004F	0050	0051	0052	0053	0054	0055	0056	0057	0058	0059
F	G	H	I	J	K	L	M	N	O	P	Q	R	S	T	U	V	W	X	Y
005A	005B	005C	005D	005E	005F	0060	0061	0062	0063	0064	0065	0066	0067	0068	0069	006A	006B	006C	006D
Z	[\]	^	_	`	a	b	c	d	e	f	g	h	i	j	k	l	m
006E	006F	0070	0071	0072	0073	0074	0075	0076	0077	0078	0079	007A	007B	007C	007D	007E			
n	o	p	q	r	s	t	u	v	w	x	y	z	{		}	~			

Latin-1 Supplement

Block from 0080 to 00FF

00A0	00A1	00A2	00A3	00A4	00A5	00A6	00A7	00A8	00A9	00AA	00AB	00AC	00AD	00AE	00AF	00B0	00B1	00B2	00B3
	ı	¢	£	¤	¥	¦	§	¨	©	ª	«	¬	-	®	¯	°	±	²	³
00B4	00B5	00B6	00B7	00B8	00B9	00BA	00BB	00BC	00BD	00BE	00BF	00C0	00C1	00C2	00C3	00C4	00C5	00C6	00C7
´	µ	¶	·	¸	¹	º	»	¼	½	¾	¿	À	Á	Â	Ã	Ä	Å	Æ	Ç
00C8	00C9	00CA	00CB	00CC	00CD	00CE	00CF	00D0	00D1	00D2	00D3	00D4	00D5	00D6	00D7	00D8	00D9	00DA	00DB
È	É	Ê	Ë	Ì	Í	Î	Ï	Ð	Ñ	Ò	Ó	Ô	Õ	Ö	×	Ø	Ù	Ú	Û
00DC	00DD	00DE	00DF	00E0	00E1	00E2	00E3	00E4	00E5	00E6	00E7	00E8	00E9	00EA	00EB	00EC	00ED	00EE	00EF
Ü	Ý	Þ	ß	à	á	â	ã	ä	å	æ	ç	è	é	ê	ë	ì	í	î	ï
00F0	00F1	00F2	00F3	00F4	00F5	00F6	00F7	00F8	00F9	00FA	00FB	00FC	00FD	00FE	00FF				
ð	ñ	ò	ó	ô	õ	ö	÷	ø	ù	ú	û	ü	ý	þ	ÿ				

Latin Extended-A

Block from 0100 to 017F

0100	0101	0102	0103	0104	0105	0106	0107	0108	0109	010A	010B	010C	010D	010E	010F	0110	0111	0112	0113
Ā	ā	Ă	ă	Ą	ą	Ć	ć	Ĉ	ĉ	Č	č	Ď	ď	Ē	ē				
0114	0115	0116	0117	0118	0119	011A	011B	011C	011D	011E	011F	0120	0121	0122	0123	0124	0125	0126	0127
Ě	ě	Ė	ė	Ę	ę	Ě	ě	Ĝ	ĝ	Ğ	ğ	Ġ	ġ	Ĥ	ĥ	Ħ	ħ		
0128	0129	012A	012B	012C	012D	012E	012F	0130	0131	0132	0133	0134	0135	0136	0137	0138	0139	013A	013B
Ĩ	ĩ	Ī	ī	Ĭ	ĭ	Į	į	İ	ı	IJ	ij	Ĵ	ĵ	Ķ	ķ	κ	Ĺ	ĺ	Ł
013C	013D	013E	013F	0140	0141	0142	0143	0144	0145	0146	0147	0148	0149	014A	014B	014C	014D	014E	014F
ł	Ł	ł	Ł	ł	Ł	ł	ł	Ń	ń	Ņ	ņ	Ň	ň	ŋ	ŋ	Ō	ō	Ŏ	ŏ



0150	0151	0152	0153	0154	0155	0156	0157	0158	0159	015A	015B	015C	015D	015E	015F	0160	0161	0162	0163
Ŏ	ŏ	Œ	œ	Ř	ř	Ŕ	ŕ	Ř	ř	Ś	ś	Ŝ	ŝ	Ş	ş	Š	š	Ț	ț
0164	0165	0166	0167	0168	0169	016A	016B	016C	016D	016E	016F	0170	0171	0172	0173	0174	0175	0176	0177
Ţ	ţ	Ț	ț	Ū	ū	Ū	ū	Ŭ	ŭ	Ů	ů	Ű	ű	Ț	ț	Ŵ	ŵ	Ŷ	ŷ
0178	0179	017A	017B	017C	017D	017E													
Ÿ	Ž	ž	Ž	ž	Ž	ž													

Latin Extended-B

Block from 0180 to 024F

018F	0192	01B5	01B6	01CD	01CE	01CF	01D0	01D1	01D2	01D3	01D4	01D5	01D6	01D7	01D8	01D9	01DA	01DB	01DC
Ə	ƒ	Ƶ	ƶ	Ǻ	ǻ	Ǽ	ǽ	Ǿ	ǿ	Ǟ	ǟ	Ǡ	ǡ	Ǣ	ǣ	Ǥ	ǥ	Ǧ	ǧ
01FA	01FB	01FC	01FD	01FE	01FF	0218	0219	021A	021B	0237									
Ǻ	ǻ	Ǽ	ǽ	Ǿ	ǿ	Ǟ	ǟ	Ǡ	ǡ	Ǣ	ǣ	Ǥ	ǥ	Ǧ	ǧ				

IPA Extensions

Block from 0250 to 02AF

0259
ə

Spacing Modifier Letters

Block from 02B0 to 02FF

02BC	02C6	02C7	02C9	02D8	02D9	02DA	02DB	02DC	02DD
’	ˆ	˘	ˉ	˙	˚	˛	˜	˝	

Combining Diacritical Marks

Block from 0300 to 036F

0300	0301	0302	0303	0304	0306	0307	0308	030A	030B	030C	0312	0326	0327	0328	0335
˘	˙	˚	˛	˜	˝	˞	˟	ˠ	ˡ	ˢ	ˣ	ˤ	˥	˦	˧

Greek and Coptic

Block from 0370 to 03FF

0385	0387	0394	03A3	03A9	03BC	03C0
ˆ	˙	Δ	Σ	Ω	μ	π

Thai

Block from 0E00 to 0E7F

0E3F
฿



Latin Extended Additional

Block from 1E00 to 1EFF

1E80	1E81	1E82	1E83	1E84	1E85	1E8A	1E8B	1E9E	1EBC	1EBD	1EF2	1EF3	1EF8	1EF9
Ŵ	ŵ	Ŷ	ŷ	Ÿ	Ź	Ż	Ł	Ł	Ł	Ł	Ł	Ł	Ł	Ł

General Punctuation

Block from 2000 to 206F

2007	2008	200B	2013	2014	2015	2018	2019	201A	201C	201D	201E	2020	2021	2022	2026	2030	2032	2033	2039
			—	—	—	‘	’	,	“	”	„	†	‡	•	...	‰	’	”	◀
203A	2044																		
›	/																		

Superscripts and Subscripts

Block from 2070 to 209F

2070	2074	2075	2076	2077	2078	2079	207F	2080	2081	2082	2083	2084	2085	2086	2087	2088	2089
⁰	⁴	⁵	⁶	⁷	⁸	⁹	ₙ	₀	₁	₂	₃	₄	₅	₆	₇	₈	₉

Currency Symbols

Block from 20A0 to 20CF

20A6	20A9	20AA	20AB	20AC	20AD	20AE	20B2	20B4	20B5	20B8	20B9	20BA	20BC	20BD
₯	₱	₲	₳	€	₣	₧	₨	₪	€	₭	₮	₯	₰	₱

Letterlike Symbols

Block from 2100 to 214F

2113	2116	2122	2126
ℓ	Nº	™	Ω

Number Forms

Block from 2150 to 218F

2150	2151	2152	2153	2154	2155	2156	2157	2158	2159	215A	215B	215C	215D	215E	215F	2160	2161	2162	2163
⅐	⅑	⅒	⅓	⅔	⅕	⅖	⅗	⅘	⅙	⅚	⅛	⅜	⅝	⅞	Ⅰ	Ⅱ	Ⅲ	Ⅳ	
2164	2165	2166	2167	2168	2169	216C	216D	216E	216F	2189									
V	VI	VII	VIII	IX	X	L	C	D	M	⅓									

Arrows

Block from 2190 to 21FF

2190	2191	2192	2193	2196	2197	2198	2199	21A9	21B0	21B1	21B2	21B3	21C6
←	↑	→	↓	↖	↗	↘	↙	↺	↻	↷	↸	↹	↻

Mathematical Operators

Block from 2200 to 22FF

2202	2206	220F	2211	2212	2215	2219	221A	221E	222B	2248	2260	2264	2265	22C5
∂	Δ	Π	Σ	−	/	·	√	∞	∫	≈	≠	≤	≥	·

Enclosed Alphanumerics

Block from 2460 to 24FF

24C5
Ⓟ

Geometric Shapes

Block from 25A0 to 25FF

25A0	25A1	25AF	25B2	25B3	25CA	25CB	25CF
■	□	▣	▲	△	◆	◯	●

Dingbats

Block from 2700 to 27BF

2713	2715	2780	2781	2782	2783	2784	2785	2786	2787	2788
✓	✕	①	②	③	④	⑤	⑥	⑦	⑧	⑨

Private Use Area

Block from E000 to F8FF

E001	E002	E100	E101	E102	E103	E104	E105	E106	E107	E108	E109	E10A	E10B	E10C	E10D	E10E	E10F	E110	E111
↺	↻	Ⓐ	Ⓐ	Ⓐ	Ⓐ	Ⓐ	Ⓐ	Ⓑ	Ⓑ	Ⓑ	Ⓑ	Ⓑ	Ⓒ	Ⓒ	Ⓒ	Ⓒ	Ⓒ	Ⓒ	Ⓒ
E112	E113	E114	E115	E116	E117	E118	E119	E11A	E11B	E11C	E11D	E11E	E11F	E120	E121	E122	E123	E124	E125
Ⓓ	Ⓓ	Ⓓ	Ⓔ	Ⓔ	Ⓔ	Ⓔ	Ⓔ	Ⓕ	Ⓕ	Ⓕ	Ⓕ	Ⓕ	Ⓖ	Ⓖ	Ⓖ	Ⓖ	Ⓖ	Ⓖ	Ⓖ
E126	E127	E128	E129	E12A	E12B	E12C	E12D	E12E	E12F	E130	E131	E132	E133	E134	E135	E136	E137	E138	E139
Ⓖ	Ⓖ	Ⓖ	Ⓖ	Ⓖ	Ⓖ	Ⓖ	Ⓖ	Ⓖ	Ⓖ	Ⓖ	Ⓖ	Ⓖ	Ⓖ	Ⓖ	Ⓖ	Ⓖ	Ⓖ	Ⓖ	Ⓖ
E13A	E13B	E13C	E13D	E13E	E13F	E140	E141	E142	E143	E144	E145	E146	E147	E148					
Ⓖ	Ⓖ	Ⓖ	Ⓖ	Ⓖ	Ⓖ	Ⓖ	Ⓖ	Ⓖ	Ⓖ	Ⓖ	Ⓖ	Ⓖ	Ⓖ	Ⓖ					

Alphabetic Presentation Forms

Block from FB00 to FB4F

FB01	FB02
fi	fl



Arabic Presentation Forms-B

Block from FE70 to FEFF

FEFF



Unencoded Glyphs

All unencoded glyphs are accessible with OpenType layout feature capable applications.

Access All Alternates

-	-	-	-	-	-
\$	˘	˘	₪	€	₪

Small Capitals From Capitals

-	-	-	-	-	-	-	-	-	-	-	-	-	-	-	-	-	-	-
0	1	2	3	4	5	6	7	8	9	˘	˘	˘	˘	-	˘	˘	˘	˘
-	-																	
˘	˘																	

Small Capitals From Capitals, Justification Alternates

-	-
˘	˘

Small Capitals From Capitals, Small Capitals

-	-	-	-	-	-	-	-	-	-	-	-	-	-	-	-	-	-	-	-
A	B	C	D	E	F	G	H	I	J	K	L	M	N	O	P	Q	R	S	T
-	-	-	-	-	-	-	-	-	-	-	-	-	-	-	-	-	-	-	-
U	V	W	X	Y	Z	À	Á	Â	Ã	Ä	Å	Æ	Ç	È	É	Ê	Ë	Ì	Í
-	-	-	-	-	-	-	-	-	-	-	-	-	-	-	-	-	-	-	-
Î	Ï	Ð	Ñ	Ò	Ó	Ô	Õ	Ö	Ø	Ù	Ú	Û	Ü	Ý	Þ	ÿ	Ā	Ă	Ą
-	-	-	-	-	-	-	-	-	-	-	-	-	-	-	-	-	-	-	-
Ć	Ĉ	Č	Č	Ď	Đ	Ē	Ĕ	É	Ę	Ė	Ĝ	Ğ	Ġ	Ģ	Ĥ	Ħ	Ĩ	Ī	Ĳ
-	-	-	-	-	-	-	-	-	-	-	-	-	-	-	-	-	-	-	-
Į	IJ	Ĵ	Ķ	Ĺ	Ł	Ł	Ł	Ł	Ł	Ł	Ł	Ł	Ł	Ł	Ł	Ł	Ł	Ł	Ł
-	-	-	-	-	-	-	-	-	-	-	-	-	-	-	-	-	-	-	-
Ś	Ŝ	Ş	Š	Ţ	Ť	Ŧ	Ũ	Ū	Ŭ	Ů	Ű	Ų	Ŵ	Ŷ	Ž	Ž	Ž	Ž	Ž
-	-	-	-	-	-	-	-	-	-	-	-	-	-	-	-	-	-	-	-
Ÿ	Ź	Ű	Ū	Ŭ	Ů	Ű	Ų	Ŵ	Ŷ	Ž	Ž	Ž	Ž	Ž	Ž	Ž	Ž	Ž	Ž
-	-																		
İ	Ł																		



Case-Sensitive Forms

-	-	-	-	-	-	-	-	-	-	-	-	-	-	-	-	-	-	-	-
()	-	0	1	2	3	4	5	6	7	8	9	:	[]	{	}	i	«
-	-	-	-	-	-	-	-	-	-	-	-	-	-	-	-	-	-	-	-
-	»	¿	—	—	◀	▶	˘	˘	-	-	-	-	-	-	-	-	-	-	-

Case-Sensitive Forms, Glyph Composition / Decomposition

-	-	-	-	-	-	-	-	-	-	-	-	-
˘	˘	˘	˘	˘	˘	˘	˘	˘	˘	˘	˘	˘

Case-Sensitive Forms, Justification Alternates

-	-
..	..

Discretionary Ligatures

-	-	-	-	-
ff	ffi	fi	fj	fl

Discretionary Ligatures, Small Capitals

-	-
FI	FL

Denominators, Fractions

-	-	-	-	-	-	-	-	-	-
0	1	2	3	4	5	6	7	8	9

Fractions

-



Fractions, Numerators

-	-	-	-	-	-	-	-	-	-
0	1	2	3	4	5	6	7	8	9

Justification Alternates

-	-	-
..

Localized Forms

-	-	-
i	Ł	ł

Ordinals, Superscript

-	-	-	-	-	-	-	-	-	-	-	-	-	-	-	-	-	-	-	-
b	c	d	e	f	g	h	j	k	l	m	p	q	r	s	t	u	v	w	x
-	-																		
y	z																		

Ornaments

-	-	-	-

Stylistic Alternates, Stylistic Set 1

-	-	-	-	-	-	-	-	-	-	-	-	-
a	à	á	â	ã	ä	å	ā	ă	ą	ǎ	Ǻ	ä

Small Capitals

-	-	-	-
SS	I	K	'N



Stylistic Set 2

-	-	-	-	-	-	-
l	í	ı	ı	ı	ı	ı

Stylistic Set 3

-	-	-	-	-	-	-	-	-	-	-	-	-	-	-	-	-	-	-	-
a	g	à	á	â	ã	ä	å	ā	ă	q	ĝ	ğ	ğ	ğ	ğ	ă	ă	ª	g

Stylistic Set 4

-
&

Stylistic Set 5

-	-	-	-	-
1	¹	₁	1	1

Stylistic Set 6

-
●

Stylistic Set 20

-
×

Superscript

-	-	-	-	-	-	-	-	-	-	-	-	-	-	-
a	i	o	®	I	II	III	IV	V	VI	VII	VIII	IX	X	

Tabular Figures

-	-	-	-	-	-	-	-	-	-	-	-	-	-	-	-	-	-	-	-	-
	#	\$	%	+	,	.	0	1	2	3	4	5	6	7	8	9	:	;	<	
-	-	-	-	-	-	-	-	-	-	-	-	-	-	-	-	-	-	-	-	-
=	>	¢	£	¤	¥	§	¬	±	×	÷	ƒ	฿			‰	℥	₩	ℳ	₧	
-	-	-	-	-	-	-	-	-	-	-	-	-	-	-	-	-	-	-	-	-
€	₰	₹	₱	₪	₴	₵	₶	₷	₸	₹	₺	₻	₼	₽	₾	₿	₽	₾	₿	₽



Slashed Zero

-	-	-	-	-	-
0	º	ø	0	0	0

Other

-
□



OpenType Layout Features

For details about OpenType Layout Features see the [OpenType Layout tag registry](#).

Substitution Features

2₂²²

Access All Alternates
This feature makes all variations of a selected character accessible.

bB

Small Capitals
This feature turns lowercase characters into small capitals. This corresponds to the common SC font layout. It is generally used for display lines set in Large and small caps, such as titles. Forms related to small capitals, such as oldstyle figures, may be included.

Bb

Small Capitals From Capitals
This feature turns capital characters into small capitals.

ſt

Discretionary Ligatures
Replaces a sequence of glyphs with a single glyph which is preferred for typographic purposes. This feature covers those ligatures which may be used for special effect, at the user's preference.

123

Tabular Figures
Replaces figure glyphs set on proportional widths with corresponding glyphs set on uniform (tabular) widths.

0

Slashed Zero
Some fonts contain both a default form of zero, and an alternative form which uses a diagonal slash through the counter. This feature allows the user to change from the default 0 to a slashed form.

7/

Numerators
Replaces selected figures which precede a slash with numerator figures, and replaces the typographic slash with the fraction slash.

/8

Denominators
Replaces selected figures which follow a slash with denominator figures.

7/8

Fractions
Replaces figures separated by a slash with 'common' (diagonal) fractions.

x²

Superscript
Replaces lining or oldstyle figures with superior figures (primarily for footnote indication), and may replace lowercase letters with superior letters (primarily for abbreviated French titles).

x₂

Subscript
The "subs" feature may replace a default glyph with a subscript glyph.

H₂

Scientific Inferiors
Replaces lining or oldstyle figures with inferior figures (smaller glyphs which sit lower than the standard baseline, primarily for chemical or mathematical notation). May also replace lowercase characters with alphabetic inferiors.

1st

Ordinals
Replaces default alphabetic glyphs with the corresponding ordinal forms for use after figures.

{G}

Case-Sensitive Forms
Shifts various punctuation marks up to a position that works better with all-capital sequences or sets of lining figures; also changes oldstyle figures to lining figures.

ſſ

Localized Forms
This feature enables localized forms of glyphs to be substituted for default forms.

GG

Stylistic Alternates
Many fonts contain alternate glyph designs for a purely esthetic effect; these don't always fit into a clear category like swash or historical. This feature replaces the default forms with the stylistic alternates.

[1]**Stylistic Set 1**

Glyphs in stylistic sets may be designed to harmonise visually, interact in particular ways, or otherwise work together.

[2]**Stylistic Set 2****[3]****Stylistic Set 3****[4]****Stylistic Set 4****[5]****Stylistic Set 5****[6]****Stylistic Set 6****[20]****Stylistic Set 20****ṛ̣ṛ̣̈́****Glyph Composition / Decomposition**

To minimize the number of glyph alternates, it is sometimes desired to decompose a character into two glyphs. Additionally, it may be preferable to compose two characters into a single glyph for better glyph processing. This feature permits such composition/decomposition.

ص**Justification Alternates**

Improves justification of text by replacing glyphs with alternate forms specifically designed for this purpose (they would have less or more advance width as need may be).

ΣΣ**Mathematical Greek**

Replaces standard typographic forms of Greek glyphs with corresponding forms commonly used in mathematical notation (which are a subset of the Greek alphabet).

1①**Alternate Annotation Forms**

Replaces default glyphs with various notational forms (e.g. glyphs placed in open or solid circles, squares, parentheses, diamonds or rounded boxes).

✻**Ornaments**

This feature gives the user access to ornament glyphs (e.g. fleurons, dingbats and border elements) in the font.

Positioning Features

N⇨E**Capital Spacing**

Globally adjusts inter-glyph spacing for all-capital text. Most typefaces contain capitals and lowercase characters, and the capitals are positioned to work with the lowercase. When capitals are used for words, they need more space between them for legibility and esthetics.

T⇨o**Kerning**

Adjusts amount of space between glyphs, generally to provide optically consistent spacing between glyphs.



Languages

Information about languages is mainly based on the Unicode Common Locale Data Repository. For details visit the [Unicode CLDR Project](#).

Latin

Afrikaans	Galician	Makhuwa-Meetto	Scottish Gaelic
Albanian	Ganda	Makonde	Sena
Asu	German	Malagasy	Serbian
Basque	Gusii	Maltese	Shambala
Bemba	Hungarian	Manx	Shona
Bena	Icelandic	Meru	Slovak
Breton	Inari Sami	Morisyen	Slovenian
Catalan	Indonesian	North Ndebele	Soga
Chiga	Irish	Northern Sami	Somali
Colognian	Italian	Norwegian Bokmål	Spanish
Cornish	Jola-Fonyi	Norwegian Nynorsk	Swahili
Croatian	Kabuverdianu	Nyankole	Swedish
Czech	Kalaallisut	Oromo	Swiss German
Danish	Kalenjin	Polish	Taita
Dutch	Kamba	Portuguese	Teso
Embu	Kikuyu	Quechua	Turkish
English	Kinyarwanda	Romanian	Upper Sorbian
Esperanto	Latvian	Romansh	Uzbek
Estonian	Lithuanian	Rombo	Volapük
Faroese	Lower Sorbian	Rundi	Vunjo
Filipino	Luo	Rwa	Walser
Finnish	Luxembourgish	Samburu	Welsh
French	Luyia	Sango	Western Frisian
Friulian	Machame	Sangu	Zulu



Character Set

Adobe

Adobe Latin-1

Apple Macintosh

MacOS Central European Latin
MacOS Croatian
MacOS Icelandic
MacOS Roman (Standard Latin)
MacOS Romanian
MacOS Turkish

ISO 8859

8859-1 Latin-1 Western European
8859-10 Latin-6 Nordic
8859-13 Latin-7 Baltic Rim
8859-15 Latin-9
8859-16 Latin-10 South-Eastern European
8859-2 Latin-2 Central European
8859-3 Latin-3 South European
8859-4 Latin-4 North European
8859-9 Latin-5 Turkish

Microsoft Windows

MS Windows 1250 Central European Latin
MS Windows 1252 Western (Standard Latin)
MS Windows 1254 Turkish Latin
MS Windows 1257 Baltic Latin



Technical Data

Identification

Table	Description	Value
-	File name	AkkuratLL-Bold.otf
-	File size	175260 bytes
-	MD5 checksum	5CF80897BCCE2C9DBFDD1141E6D989AE
head	created	Thu Sep 21 15:03:18 2017
head	modified	Wed Sep 22 15:42:06 2021
name	Unique font identifier	Lineto: Akkurat LL-Bold: 2017
name	Version string	Version 5.000; build 0025
CFF	Outline format	PostScript

Names

ID	Description	Value
1	Family name	Akkurat LL
2	Subfamily name	Bold
4	Full font name	Akkurat LL Bold
6	Postscript name	AkkuratLL-Bold

Classification & Style

Table	Description	Value
OS/2	Width class	5 - Medium (normal)
OS/2	Weight class	700 - Bold
post	Italic angle	0.0°
OS/2	fsSelection style bits	Bold
head	macStyle bits	Bold
OS/2	PANOSE Family Kind	2 - Latin Text
OS/2	PANOSE Serif Style	2 - Normal Sans
OS/2	PANOSE Weight	8 - Bold
OS/2	PANOSE Proportion	4 - Even Width
OS/2	PANOSE x-height	4 - Constant/Large



Legal Information

ID	Description	Value
0	Copyright	© 2004-2019, Copyright by Lineto GmbH. All rights reserved.
7	Trademark	Akkurat is a trademark of Lineto
8	Manufacturer	Lineto
9	Designer	Laurenz Brunner (2004-2018)
10	Font Description	LL Akkurat is designed by Laurenz Brunner, first released by Lineto in 2004. Additional scripts were designed under the direction of Laurenz Brunner by Ilya Ruderman and Yury Ostromentsky (Cyrillic), Valery Golyzhenkov (Cyrillic), Panos Haratzopoulos (Greek), Titus Nemeth (Arabic), Yanek Yontef (Hebrew), Indian Type Foundry (Devanagari), and Damca Pham (Vietnamese). Production assistance by Wei Huang. Font engineering and mastering by Alphabet.
11	Vendor URL	https://www.lineto.com
12	Designer URL	https://www.lineto.com/The+Designers
13	License Description	No use of this font is allowed without Lineto's consent and without the user's compliance with the Lineto EULA and the SUL. Lawful use of the fonts or the data contained within the font files excludes modifying, reassembling, renaming, storing on publicly available servers, redistributing and selling. Any unlawful use of this typographic software will be prosecuted. For additional information see https://lineto.com/licensing
14	License Info URL	https://lineto.com/licensing

Vertical Metric

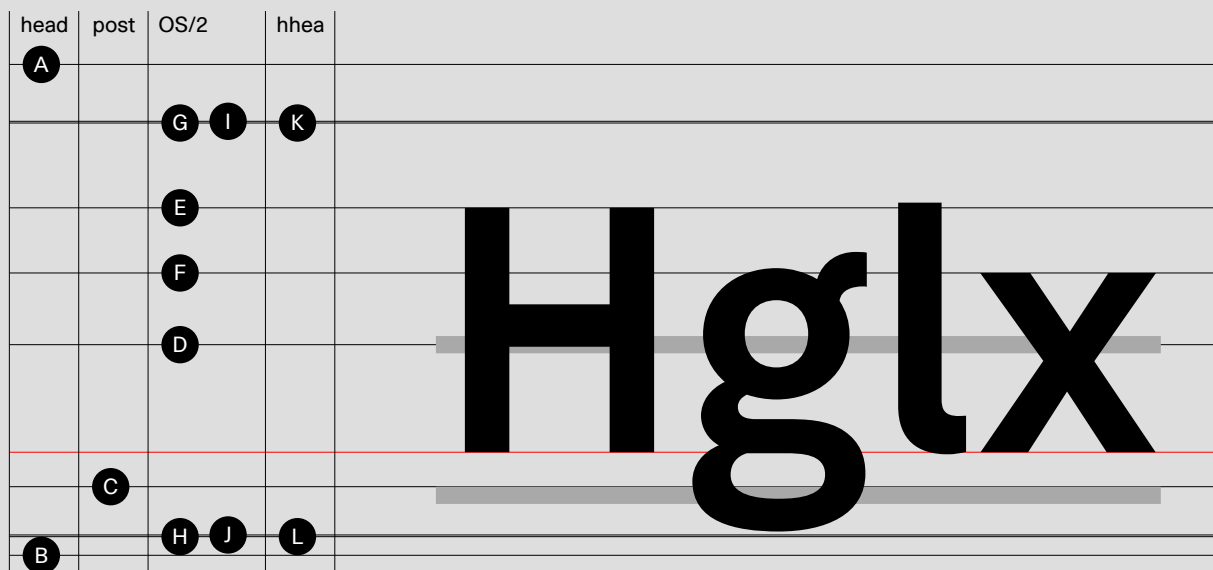


	Table	Description	Value
	head	Units perEM	1000
A	head	y Max	1125
B	head	y Min	-299
C	post	Underline Position	-100
	post	Underline Size	50
D	OS/2	Strikeout Position	312
	OS/2	Strikeout Size	50
E	OS/2	Caps Height	709
F	OS/2	x Height	520
G	OS/2	Typo Ascender	955
H	OS/2	Typo Descender	-245
	OS/2	Typo Linegap	0
I	OS/2	Win Ascender	960
J	OS/2	Win Descender	240
K	hhea	Ascender	955
L	hhea	Descender	-245
	hhea	Linegap	0